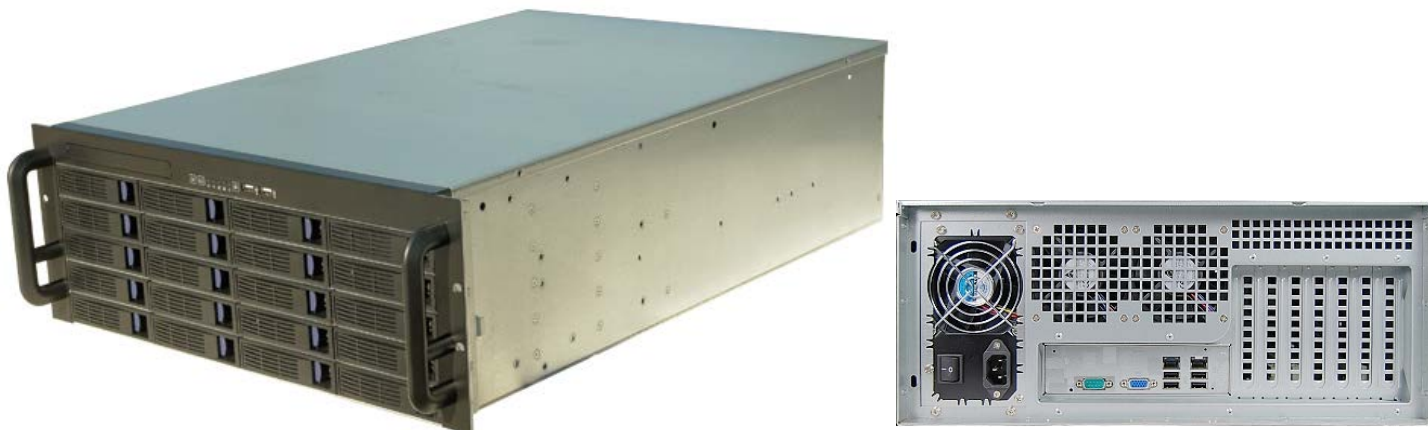


Model: SC-4520
**4U Server (Intel Xeon E5 - 2600), with 20 Hot-Swappable
SATA/SAS Drive Bay**



Specification

- Form Factor: 4U, 19" Rackmount
- Processor: Intel Xeon (Quad Core) E5 - 2609 v2 (2.5GHz, 10M Cache), supporting Dual Processor
- RAM: 8GB DDRIII ECC (supporting up to 1TB)
- HDD for OS & Software: 2.5" 500GB SATA
- Optical Drive: Slim DVD
- LAN: 2 x Intel 10/100/1000Mbps Gigabit LAN port
- Hot-swap 3.5" or 2.5" Drive Bay: supporting 20 x SATA / SAS HDD (Maximum to 60TB)
- RAID Level Supporting: 0, 1, 5, 6, 10, 50, 60 (LSI Hardware MegaRAID SATA + SAS Card)
- Expansion Slot: 3 x PCI-E X 16, 3 x PCI-E X 8
- Front LED: 1 x Power ON, 1 x HDD activity, 2x LAN activity
- Front Panel: Power ON/OFF switch, System Reset switch, 2 x USB 2.0 port
- Rear Panel: VGA, COM, 2 x LAN, 4 x USB
- Power Supply Support: 1000watt ATX
- Operating System Supporting: Windows 7, 8, 2003, 2008, 2012 / Linux
- Dimensions (W x D x H): 16.9" x 25.5" x 7.0 " (430mm x 650mm x 176mm)
- Operating Temperature: 0/50 °C
- Storage Temperature: -20/60 °C
- Storage Humidity: 10% to 90%, non-condensing
- Packing: Double Carton boxes, 570mm x 830mm x 310mm
- Weight: 25.5 Kg(net), 28.5 Kg (gross)

Optional Items

- Additional 8/16/32/64GB DDRIII ECC RAM
- Additional Intel Xeon (Quad Core) E5 - 2609 v2 (2.5GHz, 10M Cache)
- PCI-E X 16 Graphic Card (VGA/DVI/HDMI output, with 2GB RAM onboard)
- 700 watt Hot-swap Redundant Power Supply Unit
- Sliding Rail